

A-6000WIN INSTANT EDIT & PROMPT SOFTWARE FROM LISTEC.



IDEAL
IN THE
STUDIO



...OR IN
THE FIELD.



MAKE RAPID FIRE CHANGES AND PROMPT INSTANTLY WITH THE TECHNOLOGICALLY ADVANCED A-6000WIN FROM LISTEC.

InstantEdit Version 3 and higher of the A-6000WIN Prompter Program is the definition of simplicity. Open the A-6000WIN, compose a new file, or select one saved as Rich Text in your favorite Windows word processor – then toggle **Prompt!** to commence scrolling from any location and **InstantEdit** to make changes. The new and unique A-6000WIN even includes two distinct Editors; one for on-the-spot modifications to the prompter copy and the other for creating or editing upcoming stories.

There is nothing arbitrary about the A-6000WIN. The user has complete control, from customizing the screen layout to running in dual-monitor mode from selected laptops and properly configured desktop computers. With just a mouse click, the Editor, Menus

and/or Toolbars can be set to open on Monitor #1, while the computer's second display and prompter remain active on Monitor #2.

The latest versions provide features that make prompting easier than ever! Perfect for call-in shows, two separate versions of the A-6000WIN can be run simultaneously, affording quick script changeovers with a simple command. And, the **live message line** makes it possible to scroll bulletins and studio instructions in real time across the bottom of the prompter to keep the talent in control.

With Listec, an investment in the A-6000WIN now will ensure all your prompting needs are met in the future.

FLOATING TOOLBARS

for Quick and Easy Access to:

- PROMPT! – Toggles InstantEdit and Prompt On/Off.
- HOT BOOKMARKS – Add and automatically name unlimited bookmarks instantaneously while scrolling with a simple mouse click.
- QUICK BOOKMARK – Immediately go to Previous, Current or Next Bookmark.
- BOOKMARK NAVIGATION – Go to any Bookmark in the listing. Rename, or Delete individually or entirely.
- QUICK GO TO – Previous/Current/Next Page; Top/End of file.
- FIND – for quickly locating text.
- ZOOM SCREEN – To mask Toolbars.
- FLIP SCAN LINES – Reverses text presentation vertically, horizontally or both.
- BLANK SCREEN – Turns off prompter screen only in dual-monitor mode, or both displays in standard mode.
- LAUNCH EDITOR – Opens Separate Listec Editor for additional file management.
- PAUSE/RESUME – Toggles prompter scrolling On/Off.
- INVERSE VIDEO – Reverses text and background color. May also be used to flash screen.
- OPEN FILE – Presents quick access to the A-6000WIN file list, or the computer's file folders.
- HELP SCREEN – Context sensitive.

SPECIAL FEATURES include:

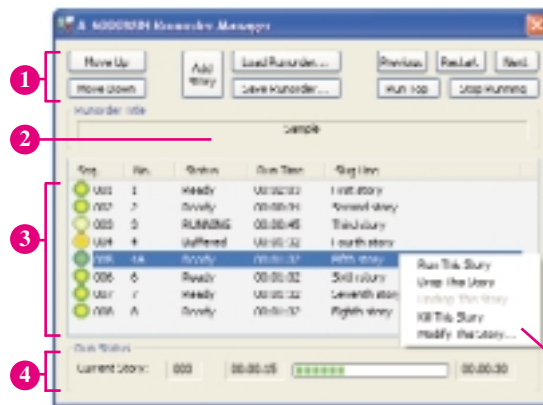
- INSTANTANEOUS ACTIVATION OF LIVE MESSAGE LINE – Simply type to commence horizontal crawl of Live Message Line, with speed regulation and option to continuously loop.
- DOUBLE CLICK – to Hide and Reveal Speed Slider or Pointer.

Customized Options Menu Settings Include:

- SPEED SLIDER – Hide, Set Color, Width and Read-Speed Area.
- TOOLBARS – Customize screen layout, including selection of fixed toolbar settings and provision for four custom screen layouts for positioning Floating Toolbars, Status Bar and Slider.
- POINTER – Change or customize Color and Size.
- PROMPTING – Unicode compliant Character Sets for International usage. Select Continuous Loop or Hard Stop at end of file. Select Font Size and Style for Live Message Line. Disable the mouse while in Speed AutoControl mode.
- MONITORS – Enables Dual-Screen Operation for Simultaneous display of Separate Edit and Prompt Screens, or single-screen operation, depending on computer configuration.
- SPECIAL MENU – For optimizing Program operation to the computer.



**LAPTOP COMPUTER OPERATING
IN DUAL-SCREEN MODE.**



A-7000WIN with Runorder Manager

RUNORDER HIGHLIGHTS

- 1 Features and Options Menu
- 2 Runorder Title of Current Story
- 3 Story Queue/ Sequence
 - -Story is Currently Running
 - -Story is Buffered
 - -Story is Ready
- 4 Detailed Run Status
- 5 Runorder Options (Pop up Menu)



**A-6WIN/RCB USB
Desktop Speed Controller
featuring push-button
commands for Runorder and
Bookmark management.**



**A-1649 Wireless RF Hand-
Held Controller,
omnidirectional to 100'.
Recommended for variable
speed regulation by the
presenter. Also functions as
a standard Windows mouse.**

SYSTEM REQUIREMENTS

Minimum Specifications:

PROCESSOR:

Desktop: 400MHz Pentium (or equivalent)
Laptop: 233MHz Pentium (or equivalent)

RAM: 64MB

GRAPHICS ACCELERATION:

Desktop: 8MB video memory (16MB recommended)
Laptop: 4MB video memory (8MB recommended)

Dual Screen Operation:

DESKTOP: Second VGA Monitor. Minimum 128MB RAM is suggested. Two Compatible Graphics Accelerator Cards (16MB video memory recommended for prompter output).

LAPTOP: Qualified 600MHz Pentium Processor (or equivalent). Minimum 128MB RAM is suggested. Graphics Acceleration having 8MB video memory. Second Monitor to track prompter operation.

Specifications subject to change without notice.
All Registered Trademarks are the property of
their respective owners.

LISTEC VIDEO

CORP.

2001 Palm Beach Lakes Blvd., Suite 411, West Palm Beach, Florida 33409
40 Oser Avenue, Suite 3, Hauppauge, New York 11788

VISIT OUR WEBSITE: www.listec.com

• Phone: (561) 683-3002 • Fax: (561) 683-7336
• Phone: (631) 273-3029 • Fax: (631) 435-4544